

# 31.5-inch 4K Mini-LED Surgical Monitor

**32HR734S**



## Outstanding Image Quality with Mini-LED

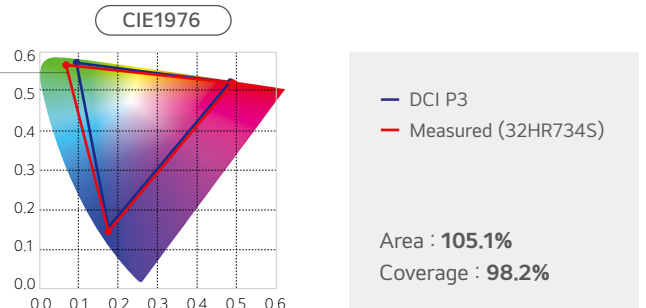
### 1.5K Local Dimming Zones

Boasting exceptional picture quality courtesy of Mini-LED technology, the 32HR734S provides brilliant and reliable images with a high level of detail, allowing surgeons to experience an immersive environment to focus entirely on the surgical procedure and operate precisely. Local Dimming, inherent to Mini-LED technology, enables precise brightness control across specific sections of the LED backlight, enhancing visual contrast by darkening the dark areas and brightening the light areas. This monitor, equipped with 1.5K Local Dimming zones, significantly enhances the dynamic contrast ratio up to 1,000,000 : 1 and reaches a peak brightness of 2,000 cd/m<sup>2</sup>. Additionally, the Local Dimming technique used in this Mini-LED monitor may improve energy efficiency compared to traditional edge-lit backlight technologies, thereby prolonging the display's durability.



### DCI-P3 98%

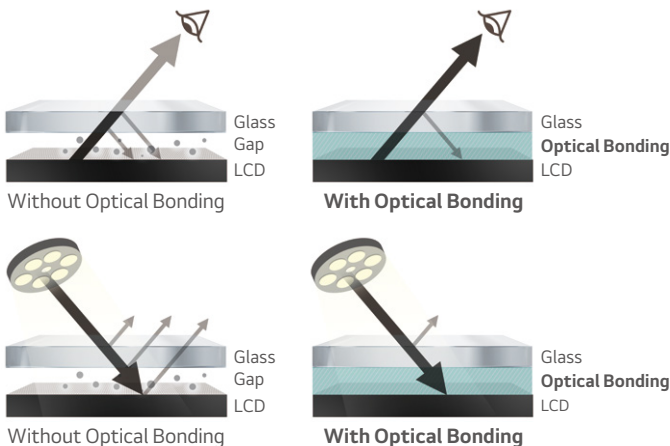
With a wide color range of DCI-P3 98% (CIE1976), the 32HR734S provides a great level of detail with optimized image clarity and color accuracy.



## Suitable for Surgical Environments

### Optical Bonding

The 32HR734S is engineered with optical bonding technology, seamlessly integrating the backlight, module, and glass without any air gaps, further enhanced with Anti-Glare, Anti-Reflection, and Anti-Fingerprint coatings on the front glass. This combination significantly improves display readability by minimizing reflections and glare, ensuring that image clarity and color accuracy are optimized even in brightly lit environments.



### IP45 (front) & IP32 (except for front) & IK06

With IP45 (front) and IP32 (except for front) ratings, the 32HR734S is suitable for surgical environments where blood and other bodily fluids are likely to splash. Additionally, this monitor offers high resistance to physical impact, as denoted by its IK06 rating.

### 12G-SDI Support

The 32HR734S supports 12G-SDI, which enables long-distance transmission of 4K signals over a single coaxial cable.

### 9.7 kg

With a lightweight design of 9.7 kg, this surgical monitor is suited for mounting on surgical arms and pendants.

\* All images, including surgical images on the display, are shown for illustrative purposes only, and may vary from the actual product / usage / or images appearing on the display.

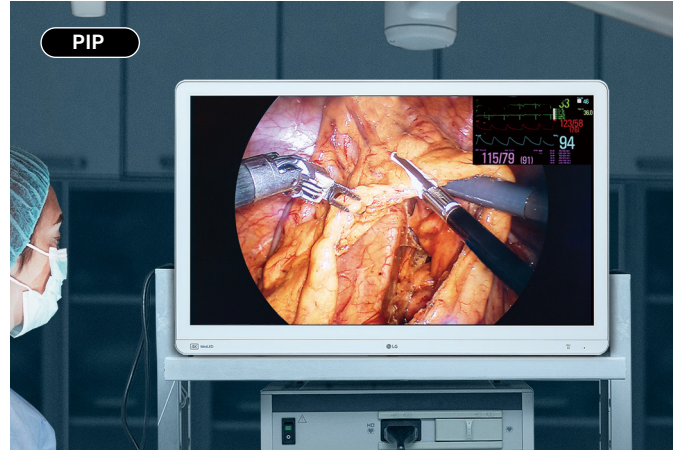
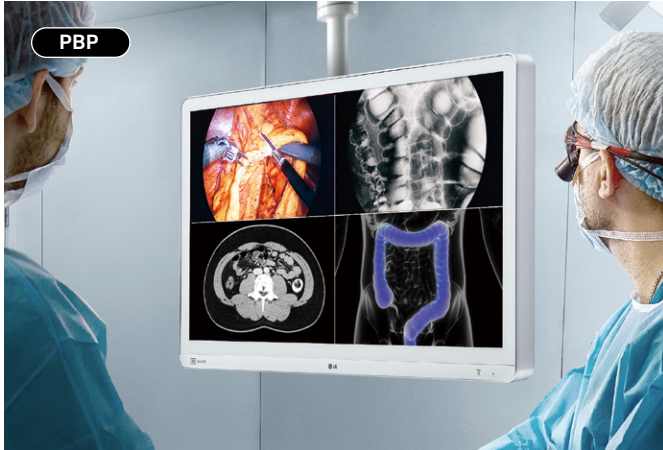




## User Convenience

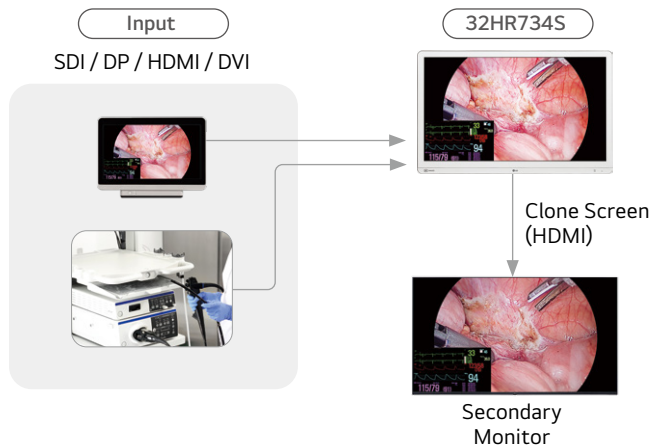
### Up to 4 PBP & PIP

The 32HR734S supports both 4PBP (Picture-by-Picture) and PIP (Picture-in-Picture), allowing it to display input from up to four different sources simultaneously or overlay one input on another. These features enable medical professionals to monitor various critical information streams concurrently on a single screen, enhancing operational efficiency and decision-making. For example, using the 32HR734S, medical staff can view a combination of laparoscopic and fluoroscopic images while monitoring vital signs.



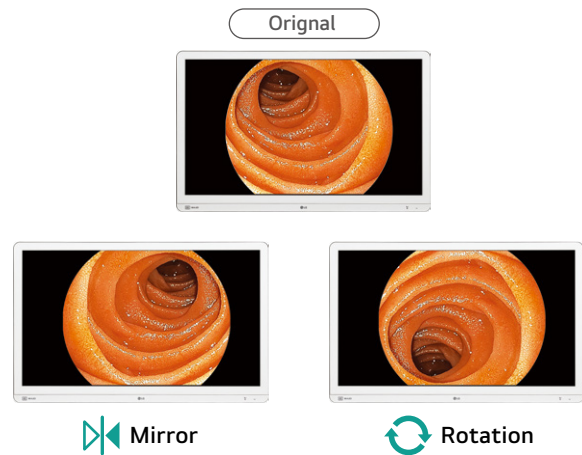
### Clone Screen

The 32HR734S features a Clone Screen function that replicates the entire display content onto a secondary monitor, even with advanced settings like PIP or PBP. The Clone Screen functionality is facilitated through the HDMI output. Thanks to Clone Screen, members of the surgical team can visually monitor the progress of the surgery, which can help facilitate efficient collaboration and communication.



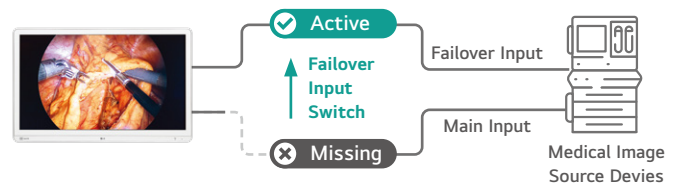
### Mirror Mode & Rotation Mode

Mirror Mode and Rotation Mode allow users to adjust the display for optimal viewing, whether flipping the image horizontally or rotating it 180 degrees to match the orientation of the surgical camera.



### Failover Input Switch

The Failover Input Switch feature on this monitor ensures uninterrupted display by automatically switching to an alternative video source if the primary input fails. This function is compatible across all interfaces, including HDMI, SDI, DVI, and DP, offering flexibility in setup and redundancy in signal sources. Particularly for 12G-SDI, the system can automatically switch from the primary input to the next available one if a signal loss is detected. This seamless transition between inputs minimizes disruptions and ensures consistent video output, essential for surgical applications where continuity and image clarity are highly important.



\* All images, including surgical images on the display, are shown for illustrative purposes only, and may vary from the actual product / usage / or images appearing on the display.

# 31.5-inch 4K Mini-LED Surgical Monitor

## 32HR734S

### Specification

#### 32HR734S

<b>Model</b>		
<b>Display</b>		
<b>Display</b>	Panel Type	IPS
<b>Display</b>	Size (Aspect Ratio)	31.5-inch (16 : 9)
<b>Display</b>	Resolution	4K (3,840 x 2,160)
<b>Display</b>	Backlight Technology	Mini-LED
<b>Display</b>	Color Gamut (Typ.)	DCI-P3 98% (CIE1976)
<b>Display</b>	Color Bit	10 bit
<b>Display</b>	Viewing Angle (CR≥10)	178° (Right / Left), 178° (Up / Down)
<b>Display</b>	Brightness (Typ.)	800 cd/m <sup>2</sup>
<b>Display</b>	Brightness (Stabilization)	500 cd/m <sup>2</sup>
<b>Display</b>	Peak Brightness (Typ.)	2,000 cd/m <sup>2</sup>
<b>Display</b>	Surface Treatment	Protection Glass (Optical Bonding, Anti-Reflection, Anti-Fingerprint, Anti-Glare)
<b>Display</b>	Contrast Ratio (Typ.)	1,000 : 1
<b>Display</b>	Response Time (GtG <sup>1)</sup> )	5 ms (GtG at Faster)
<b>Feature</b>	DICOM Compliant	Yes
<b>Feature</b>	HW Calibration	Yes (LG Calibration Studio)
<b>Feature</b>	HDR	HDR 10, HDR Effect
<b>Video Signals</b>	Input Terminals	HDMI x 1, DisplayPort x 1, SDI (12G / 3G) x 4, DVI-D x 1
<b>Video Signals</b>	Output Terminals	HDMI (Clone Screen) x 1, SDI (12G / 3G) x 4
<b>Connectivity</b>	USB	USB 3.0 1 Upstream, 1 Downstream
<b>Power</b>	AC Input	100-240 Vac, 50/60 Hz
<b>Power</b>	Power Consumption (Max.)	130 W
<b>Power</b>	Power Consumption (DC Off)	Less than 0.3 W
<b>Resistance Rating<sup>2)</sup></b>		IP45 <sup>3)</sup> (Front), IP32 <sup>4)</sup> (Except for Front), IK06 <sup>5)</sup>
<b>User Convenience</b>	PBP / PIP	Yes (2 / 3 / 4 PBP) / Yes
<b>User Convenience</b>	Screen Flip	Mirror Mode & Rotation Mode
<b>User Convenience</b>	Failover Input Switch	Yes
<b>Physical Specifications</b>	Weight	9.7 kg
<b>Physical Specifications</b>	Wall Mount Size	200 x 100 mm / 100 x 100 mm

1) GtG: Gray to gray response time

2) Tested under controlled laboratory conditions with an IP/ IK rating. Dry before using. Do not charge while wet.

3) IP45: Protected against solid foreign objects of 1.0 mm Ø and greater / Protected against access to hazardous parts with a wire / Protected against water jets.

4) IP32: Protected against solid foreign objects of 2.5 mm Ø and greater / Protected against access to hazardous parts with a tool / Protected against vertically falling water drops when enclosure tilted up to 15°.

5) IK06: Protected against 1 joule impact.

\* Specifications may vary by region and all features, standards, and other product specifications are subject to change without notice or obligation.



**LG Electronics Inc.**

<https://www.lg.com/global/business/virtual-showroom/medical-display>  
Copyright © 2024 LG Electronics. All Rights Reserved.

